

MELLOR MILL SK6 7DR

Built for Oldknow in 1790-92, 550 people, mostly women and children, worked here in 1804. Oldknow changed this area forever. Archaeologists have been excavating the site since 2016 to understand more about this important place. Their work has helped us understand how its three waterwheels worked. Since accidentally burning down in 1892, the ruins have been reclaimed by nature. One rare and beautiful black walnut tree, sown by Samuel Oldknow himself in 1790, outlived both him and his mill.

How long does it take?
It takes a few hours to visit Mellor Mill. Or make a day of it by including Roman Lakes.

Painting of Mellor Mill by Joseph PARRY.
Photographed by Arthur M. Procter and reproduced by kind permission of Mellor Archaeological Trust.

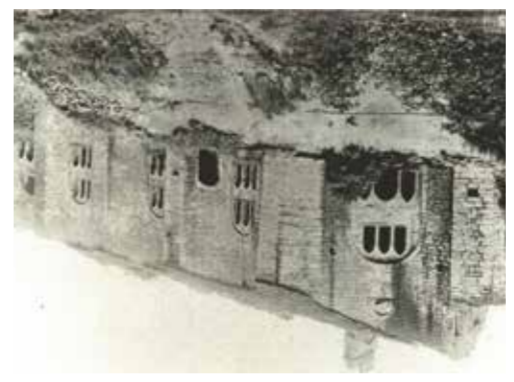


LIME KILNS SK6 7DW

Oldknow built these industrial kilns between 1797 and 1802 to burn limestone from nearby. Some lived in cottages built into the bank above the kiln tunnels. These are now protected as a Scheduled Ancient Monument. Men unloaded thousands of tonnes of limestone and coal from boats into pots at the tops of the kilns. Can you find the circles in the grass which show us where the tops of those pots are?

How long does it take?
It only takes half an hour to visit the lime kilns.

Lime kilns, bays 1-7, c.1900s.
Courtesy of MHS/Maple Website Virtual History Tour



Explore the fairy tale remains of the Gothic-style lime kilns.
Photograph by Arthur M. Procter

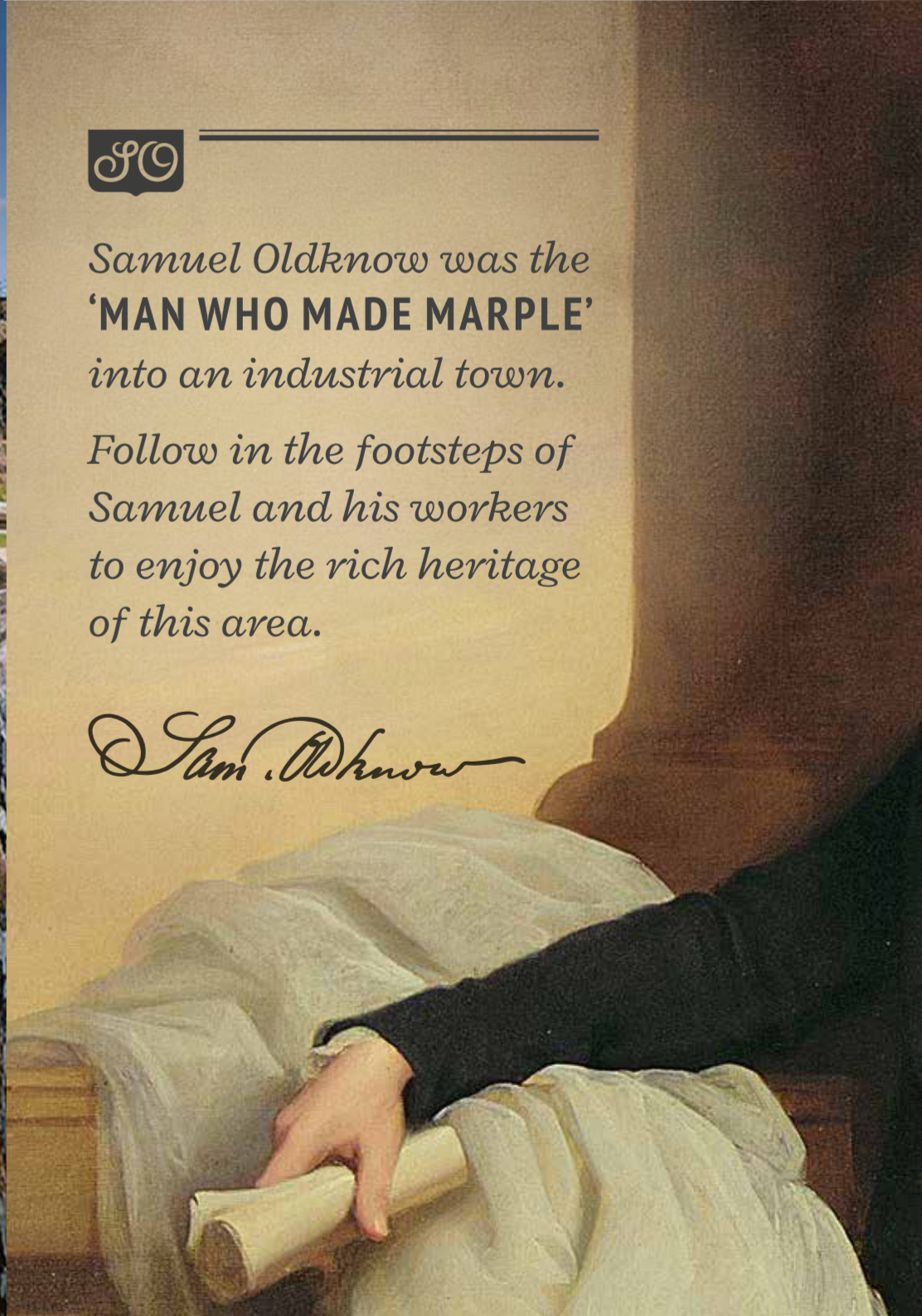


AQUEDUCT SK6 5LD

Marple Aqueduct is one of only a few Scheduled Ancient Monuments that you can cross by boat. This amazing structure offers stunning views over the River Goyt and its wooded landscapes. Opened in 1800, it was built using brick and two types of local stone. It carries the Peak Forest Canal from its terminus at the Bugsworth Basin, Derbyshire, towards Dukinfield Junction, Manchester, where it joins the Ashton Canal. Engineers and volunteers helped to conserve this special place.

How long does it take?
If you only have an hour then you can explore the aqueduct.

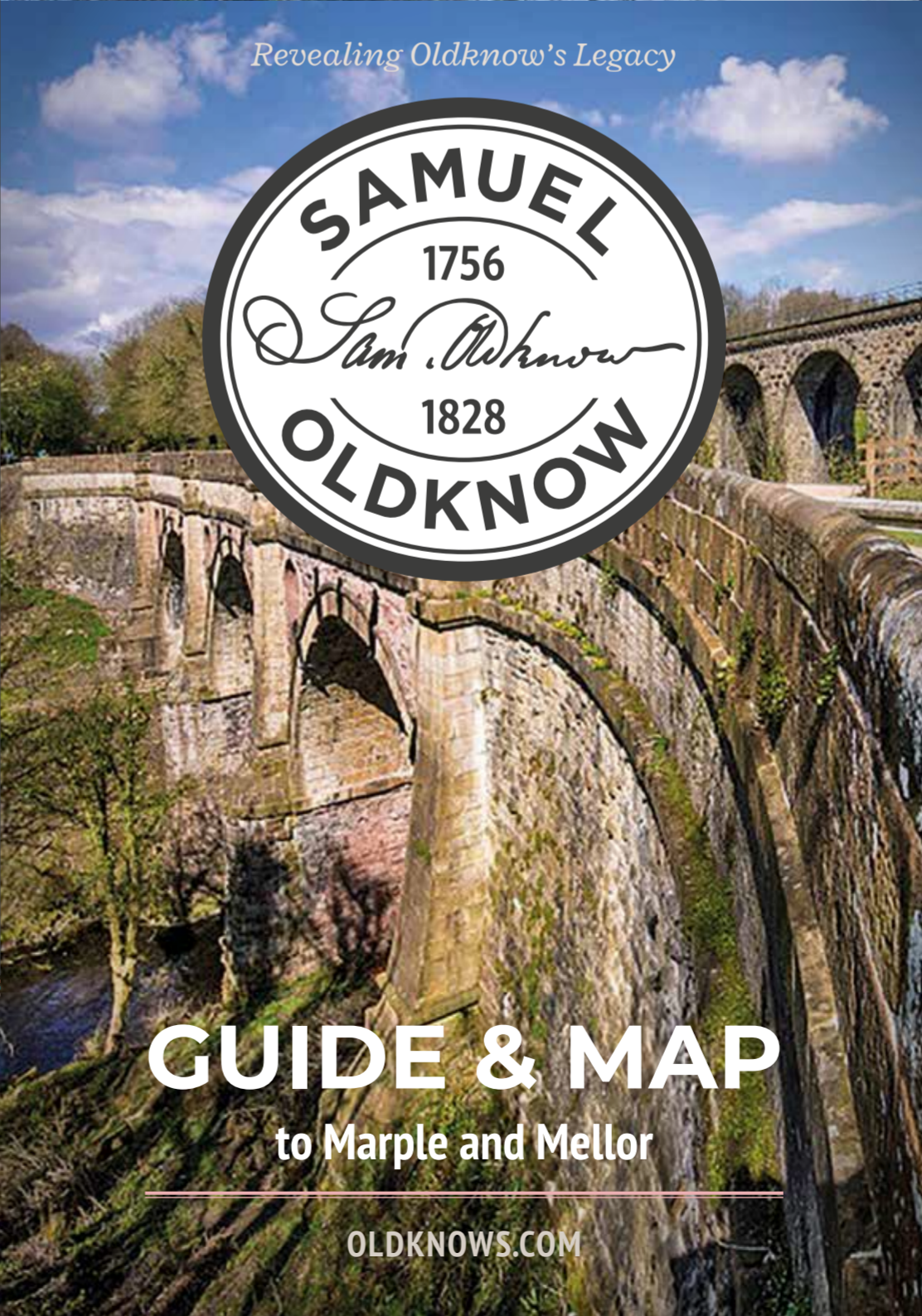
Visit Britain's tallest aqueduct.
© TBC



Samuel Oldknow was the 'MAN WHO MADE MARPLE' into an industrial town.

Follow in the footsteps of Samuel and his workers to enjoy the rich heritage of this area.

Sam. Oldknow



GUIDE & MAP
to Marple and Mellor

OLDKNOWS.COM

HOW TO FIND US
Marple is 15 minutes drive from Stockport, or 30 minutes directly on the train from Manchester, and an hour from Sheffield.

To plan your journey on public transport, visit traveline.info

OLDKNOW'S APP
You can download our free app from Oldknows.com for lots more stories about Oldknow's legacy. Plug in your earphones, put your phone away and take a tour of Samuel Oldknow's finest work.

LEARN MORE
If you'd like to book a talk, tour or educational visit then please get in touch via the website.

OLDKNOWS.COM

Funding raised by **The National Lottery** and awarded by the Heritage Lottery Fund

LOTTERY FUNDED

Canal & River Trust
Making life better by water

Mellor Archaeological Trust

STOCKPORT METROPOLITAN BOROUGH COUNCIL

Marple
MILL, MALL & CANALS

OTHER HIGHLIGHTS

Oldknow's former mill ponds provided water to power Mellor Mill. These are now known as the Roman Lakes leisure park (SK6 7HB).

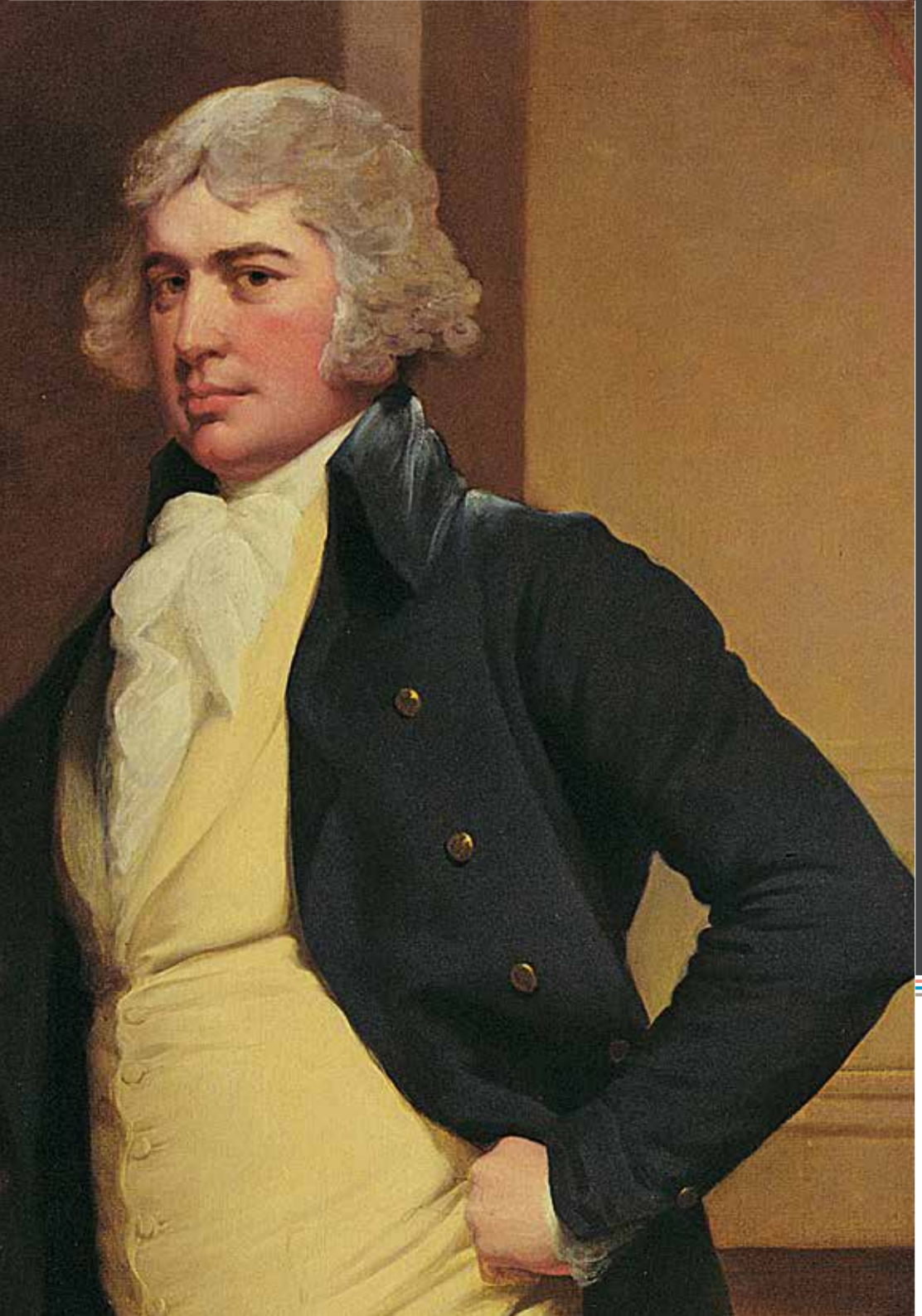
Oldknow was a champion of the Peak Forest Canal along which he built a warehouse and Posset Bridge (SK6 7BZ). You can still see the remains of the wharf next to his warehouse. The wharf can be found using the mooring post and crane which still survive today.

How long does it take?
Stay a while longer - the locks are a 30-minute walk along the towpath from the aqueduct.

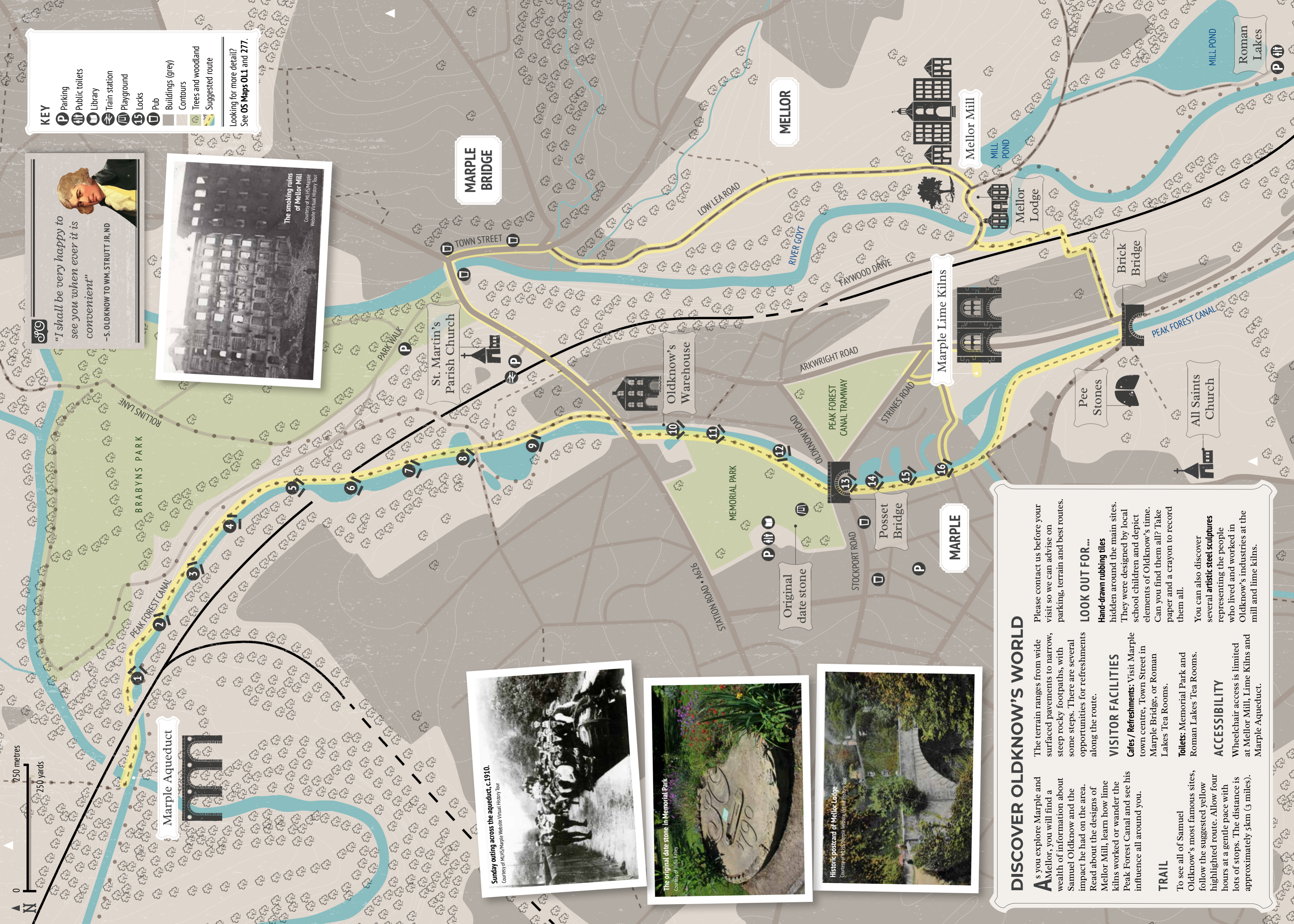
Roman Lakes Postcard
The mill pond at Mellor Mill © India Rabey

Oldknow's warehouse nowadays
Courtesy: Bugsworth Basin Heritage Trust

Clockwise from top left: Posset Bridge c.1920

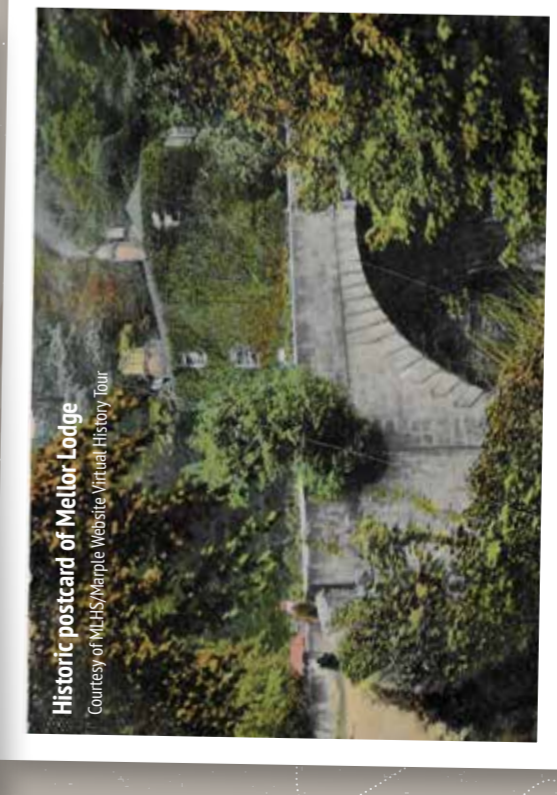
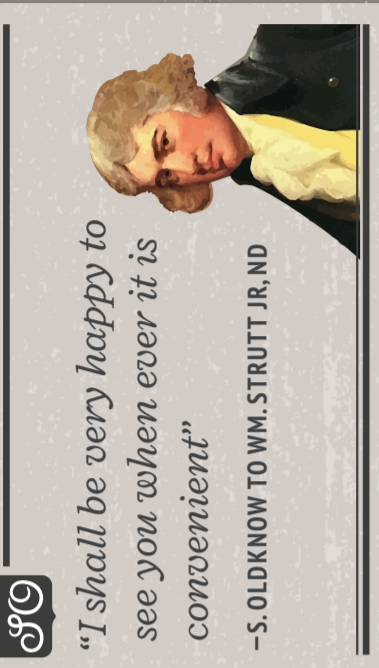


Cover image: Marple Aqueduct. © Xxxxxx



- KEY**
- Parking
 - Public toilets
 - Library
 - Train station
 - Playground
 - Locks
 - Pub
 - Buildings (grey)
 - Contours
 - Trees and woodland
 - Suggested route

Looking for more detail?
See OS Maps **OL1** and **277**.



DISCOVER OLDKNOW'S WORLD

As you explore Marple and Mellor, you will find a wealth of information about Samuel Oldknow and the impact he had on the area. Read about the designs of Mellor Mill, learn how lime kilns worked or wander the Peak Forest Canal and see his influence all around you.

TRAIL

To see all of Samuel Oldknow's most famous sites, follow the suggested yellow highlighted route. Allow four hours at a gentle pace with lots of stops. The distance is approximately 5km (3 miles).

The terrain ranges from wide surfaced pavements to narrow, steep rocky footpaths, with some steps. There are several opportunities for refreshments along the route.

VISITOR FACILITIES

Cafes / Refreshments: Visit Marple town centre, Town Street in Marple Bridge, or Roman Lakes Tea Rooms.

Toilets: Memorial Park and Roman Lakes Tea Rooms.

ACCESSIBILITY

Wheelchair access is limited at Mellor Mill, Lime Kilns and Marple Aqueeduct.

Please contact us before your visit so we can advise on parking, terrain and best routes.

LOOK OUT FOR...

Hand-drawn rubbing tiles hidden around the main sites. They were designed by local school children and depict elements of Oldknow's time. Can you find them all? Take paper and a crayon to record them all.

You can also discover several **artistic steel sculptures** representing the people who lived and worked in Oldknow's industries at the mill and lime kilns.